

NF ELIT BuildPly



BuildPly™ is a premium birch plywood panel crafted from 100% high-quality birch veneers and advanced adhesives. Designed for structural, industrial, and decorative applications, it delivers superior strength, moisture resistance, and a smooth surface ideal for machining, painting, laminating, or finishing. Certified to international standards, including FSC™, CARB, and EN 13986, BuildPly™ ensures quality and environmental compliance.

Phone / WhatsApp:

(513) 255-3103

info@nfelitwood.com



ENHANCED MOISTURE
RESISTANCE



100%
Birch



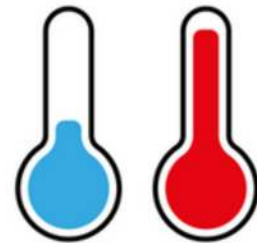
Smooth
Surface



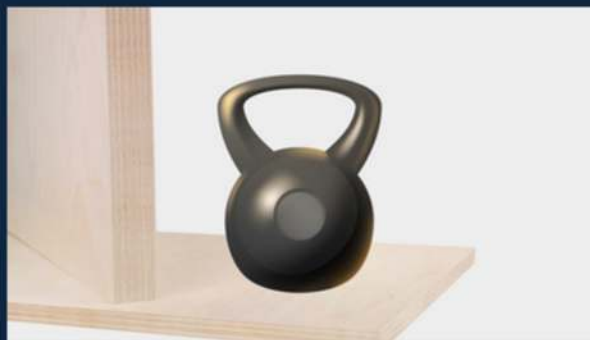
Void-
Free



Certified



RESISTANT TO TEMPERATURE
FLUCTUATIONS
FROM -40°F TO +122°F



DURABILITY AND
WEAR RESISTANCE



WIDE RANGE OF
THICKNESSES AND
SIZES

Strong • Lightweight • Durable

Key Benefits

- **High Moisture Resistance:** Performs reliably in humid conditions without warping or swelling, certified to EN 314-2 Class 2 (WBP adhesive).
- **Exceptional Strength:** Surpasses softwood plywood, validated by ANSI/HPVA HP-1 standards.
- **Durable Surface:** Hard, wear-resistant finish withstands heavy use, backed by CARB Phase 2/TSCA Title VI certification.
- **Temperature Stability:** Reliable from -40°F to +122°F (-40°C to +50°C), suitable for diverse environments.
- **Versatile Options:** Multiple sizes, thicknesses, and finishes, with FSC™ certification available.

Face Grades (U.S. / EU Equivalentents)

- **A/B (I/II):** Clear face, sound reverse
- **B/B (II/II):** Minor repairs on both sides
- **C/D (III/IV):** Utility grade for structural or hidden use

Surface Finishes

- **Phenolic Film-Faced** (smooth or mesh pattern)
- **Sanded 2 Sides (S2S)**
- **Sanded 1 Side (S1S)**
- **Unsanded (NS)**
- **Edges:** Raw or sealed with acrylic paint (optional)

Adhesive Systems

- **WBP (Phenol-Formaldehyde):** Moisture-proof, meets EN 314-2 Class 2
- **UF (Urea-Formaldehyde):** Interior grade, meets EN 314-2 Class 1
- **Low-Emission UF:** CARB Phase 2/TSCA Title VI (≤ 0.05 ppm formaldehyde)
- **E0.5/E0 formulations** available on request

Available Sheet Sizes

- 48" x 96" (1220 x 2440 mm)
- 60" x 60" (1525 x 1525 mm)
- 60" x 120" (1525 x 3050 mm)
- Custom sizes available upon request

Thicknesses

- 1/8" (≈ 3 mm)
- 1/4" (≈ 6 mm)
- 3/8" (≈ 9 mm)
- 1/2" (≈ 12 mm)
- 1-1/2" (40 mm)*

*on request

Technical Specifications

- **Density:** 40–44 lb/ft³ (640–700 kg/m³)
- **Moisture Content:** 5–12%
- **Strength Properties:**
- **Static Bending Strength:** $\geq 10,150$ psi (70 MPa)
- **Tensile Strength:** $\geq 4,350$ psi (30 MPa)
- **Modulus of Elasticity (Bending):** $\geq 1,015,000$ psi (7,000 MPa)



APPLICATIONS

NF ELIT

For the Production of High-Quality Furniture



Toys and Children's Furniture



Construction, Exterior and Interior Use



Wall Panels



Underlayment for engineered hardwood and parquet flooring



Use in Commercial Transportation

